

A PART OF BAY WINDS, PLANNED UNIT DEVELOPMENT
BOCA WINDS - PARCEL F

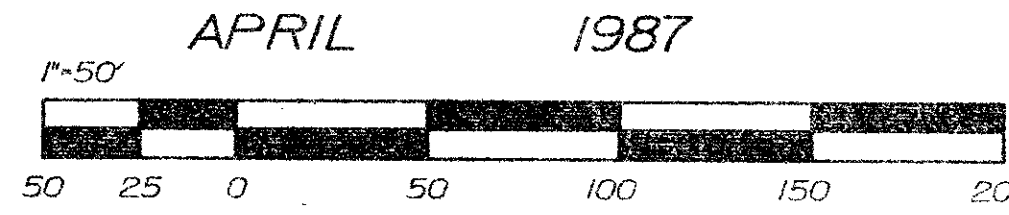
LYING IN SECTION 27, TOWNSHIP 47 SOUTH, RANGE 41 EAST
 BEING A REPLAT OF A PORTION OF TRACTS 12, 13, 14, 15 and 16 OF FLORIDA FRUITLANDS COMPANY'S SUBDIVISION NO. 2, P.B. 1, PG. 102, OF THE PUBLIC RECORDS OF THE COUNTY OF PALM BEACH, STATE OF FLORIDA

THIS INSTRUMENT WAS PREPARED BY STANLEY S. VENABLE, P.L.S.
 IN AND FOR THE OFFICE OF CONSULTING ENGINEERING, INC.
 3661 W. OAKLAND PARK BLVD., SUITE 308
 FORT LAUDERDALE, FLORIDA 33311

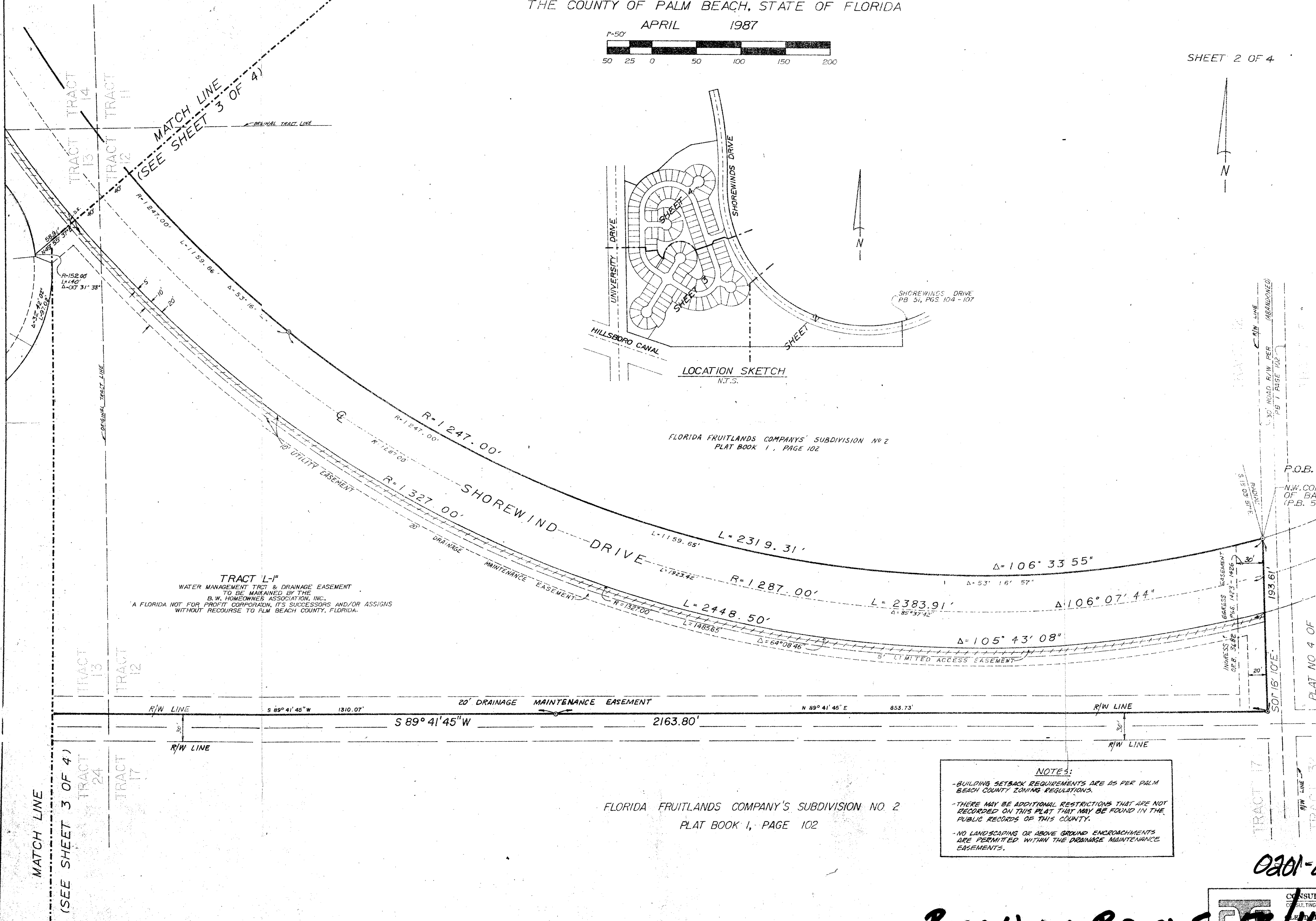
166

STATE OF FLORIDA 55
 COUNTY OF PALM BEACH
 THIS PLAT WAS FILED FOR RECORD
 AT _____ THIS _____ DAY
 OF _____ A.D. 1987, AND
 DULY RECORDED IN PLAT BOOK
 _____ ON PAGES _____ THRU

 JOHN B. DINKLE,
 CLERK OF THE CIRCUIT COURT
 BY: _____ C.C.



SHEET 2 OF 4



TAZ 278 374491
 SUBDIVISION * Boca Winds
 BOOK 58 PAGE 166
 FLOOD ZONE #01
 QUAD # 69 ZONING
 SE ZIP CODE 33434
 PUD NAME Parcel F

CONSUL-TECH ENGINEERING, INC.
 CONSULTING ENGINEERS • PLANNERS • LAND SURVEYORS
 FEDERAL BANK BUILDING
 3661 W. OAKLAND PARK BLVD., SUITE 308
 FORT LAUDERDALE, FLORIDA 33311

0201-007

Boca Winds - Parcel F 58/166